



Quality Products. Service Excellence.

## Type 4X, 6P Polycarbonate & General Purpose ABS Enclosures 1554

Series

Watertight, Flat Lid, UL Listed Options



### Key Features:

- Ideally suited for mounting printed circuit boards or DIN rail mounted components (see photo features below for details).
- ABS Versions are molded from general purpose material which carries a flammability rating of UL94-HB. For indoor use.
- Polycarbonate versions are UV stabilized for outdoor use. Gray polycarb carries a UL94-5VA rating, while clear and smoked lids carry a UL94V-0 rating.
- Polycarbonate versions are cUL and UL 508A listed (File # E65324). ABS plastic versions are not UL listed.
- Enclosure color is a light gray (RAL 7035).
- Gasketed lid with two piece "tongue & groove" construction provides protection against access of oil, dust and water.
- Replaceable gasket is one piece made from high temperature, U.L. listed silicone. Supplied loose inside the enclosure (not pre-installed).
- Polycarb versions are designed to meet NEMA Type 4, 4X, 6, 6P, 12 & 13 ratings which meet and exceed IP ratings up to and including IP68. (Except 1554/55 V size which is 4,4X only)
- ABS Plastic versions are designed to meet IP66.
- Lid is secured with included M4 stainless steel machine screws which are threaded into corrosion resistant bushings for repetitive assembly & disassembly. All hardware is designed to avoid corrosion caused by harsh environments over time.
- Lid screws are self captivating (lid holes are threaded with the first installation of lid screws).
- Internal features are maximized for mounting options and vary with size:
  - Internal DIN rail mounting tabs molded into most models, except sizes "C" and "D".
  - Threaded (M3) integral brass inserts and/or standoffs (#6 self tapping screws) for P.C. board or inner panel mounting in all but the smallest size ("B").
  - Vertical P.C. card guides (for 1.5 mm thick P.C. boards) are molded in all but the smallest size ("B").

### Photo Features:

Polycarbonate versions available with gray, clear, or smoked lid. ABS version available only in gray.

Smoked



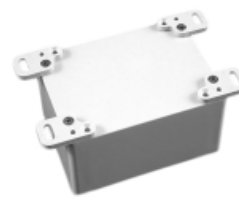
**Gray**

**Clear**

Wall-mounting holes are located outside of the gasket channel

Same wall mounting holes can be used to install an accessory foot kit, 1554FT

Internal mounting posts can be used to mount accessory inner panels, PC boards, or DIN rails (inner panel shown)



**Accessories**

- Inner Panels
- Breather Kit
- Pressure Compensation Plug
- Hole Plugs
- Pole Mount Kit
- Replacement Gaskets
- Small Rainproof Ventilator
- Hole Plugs
- Hole Plugs
- Liquid-Tight Cordgrips (Nickel Plated Brass)
- Liquid-Tight Cordgrips (Nylon)

**Enclosure Part Numbers**

ABS (not UL)		Polycarbonate (UL Listed)		Qty Lid				Replacement		Replacement	
Gray Lid	Gray Lid	Clear Lid	Smoked Lid	Screws	Length	Width	Total Height	Inner Panel	Foot Kit	Gasket	Screws (50-pk)
1554BGY	1554B2GY	1554B2GYCL	1554B2GYSL	4	2.60	2.60	1.60	1554BPL	1554FT	1554BGASKET	SC576-50
1554EGY	1554E2GY	1554E2GYCL	1554E2GYSL	4	3.50	3.50	2.40	1554EPL	1554FT	1554EGASKET	SC576-50
1554EEGY	1554EE2GY	1554EE2GYCL	1554EE2GYSL	4	3.50	3.50	3.50	1554EPL	1554FT	1554EGASKET	SC576-50
1554LGY	1554L2GY	1554L2GYCL	1554L2GYSL	4	4.13	4.13	2.36	1554LPL	1554FT	1554LGASKET	SC576-50
1554LAGY	1554LA2GY	1554LA2GYCL	1554LA2GYSL	4	4.13	4.13	3.54	1554LPL	1554FT	1554LGASKET	SC576-50
1554CGY	1554C2GY	1554C2GYCL	1554C2GYSL	4	4.70	2.60	1.60	1554CPL	1554FT	1554CGASKET	SC576-50
1554DGY	1554D2GY	1554D2GYCL	1554D2GYSL	4	4.70	2.60	2.40	1554CPL	1554FT	1554CGASKET	SC576-50
1554FGY	1554F2GY	1554F2GYCL	1554F2GYSL	4	4.70	3.50	2.40	1554FPL	1554FT	1554FGASKET	SC576-50
1554GGY	1554G2GY	1554G2GYCL	1554G2GYSL	4	4.70	3.50	3.15	1554FPL	1554FT	1554FGASKET	SC576-50
1554NGY	1554N2GY	1554N2GYCL	1554N2GYSL	4	4.70	4.70	2.40	1554NPL	1554FT	1554NGASKET	SC576-50
1554PGY	1554P2GY	1554P2GYCL	1554P2GYSL	4	4.70	4.70	3.50	1554NPL	1554FT	1554NGASKET	SC576-50
1554QGY	1554Q2GY	1554Q2GYCL	1554Q2GYSL	4	5.51	5.51	2.36	1554QPL	1554FT	1554QGASKET	SC576-50
1554QAGY	1554QA2GY	1554QA2GYCL	1554QA2GYSL	4	5.51	5.51	3.54	1554QPL	1554FT	1554QGASKET	SC576-50
1554JLGY	1554JL2GY	1554JL2GYCL	1554JL2GYSL	4	6.30	3.50	1.80	1554JPL	1554FT	1554JGASKET	SC576-50
1554JGY	1554J2GY	1554J2GYCL	1554J2GYSL	4	6.30	3.50	2.40	1554JPL	1554FT	1554JGASKET	SC576-50
1554KGY	1554K2GY	1554K2GYCL	1554K2GYSL	4	6.30	3.50	3.50	1554JPL	1554FT	1554JGASKET	SC576-50
1554RGY	1554R2GY	1554R2GYCL	1554R2GYSL	4	6.30	6.30	2.40	1554RPL	1554FT	1554RGASKET	SC576-50

ABS (not UL)		Polycarbonate (UL Listed)		Qty Lid						Replacement	Replacement
Gray Lid	Gray Lid	Clear Lid	Smoked Lid	Screws	Length	Width	Total Height	Inner Panel	Foot Kit	Gasket	Screws (50-pk)
1554SGY	1554S2GY	1554S2GYCL	1554S2GYSL	4	6.30	6.30	3.50	1554RPL	1554FT	1554RGASKET	SC576-50
1554HLGY	1554HL2GY	1554HL2GYCL	1554HL2GYSL	4	7.10	4.70	1.80	1554HPL	1554FT	1554HGASKET	SC576-50
1554HGY	1554H2GY	1554H2GYCL	1554H2GYSL	4	7.10	4.70	2.40	1554HPL	1554FT	1554HGASKET	SC576-50
1554TGY	1554T2GY	1554T2GYCL	1554T2GYSL	4	7.10	4.70	3.50	1554HPL	1554FT	1554HGASKET	SC576-50
1554WGY	1554W2GY	1554W2GYCL	1554W2GYSL	4	7.10	7.10	2.36	1554WPL	1554FT	1554WGASKET	SC576-50
1554WAGY	1554WA2GY	1554WA2GYCL	1554WA2GYSL	4	7.10	7.10	3.54	1554WPL	1554FT	1554WGASKET	SC576-50
1554UGY	1554U2GY	1554U2GYCL	1554U2GYSL	4	7.90	4.70	3.50	1554UPL	1554FT	1554UGASKET	SC576-50
1554VGY	1554V2GY	1554V2GYCL	1554V2GYSL	4	9.40	6.30	3.50	1554VPL	1554FT	1554VGASKET	SC583-50
1554VALGY	1554VAL2GY	1554VAL2GYCL	1554VAL2GYSL	4	9.40	6.30	2.36	1554VAPL	1554FT	1554VAGASKET	SC583-50
1554VAGY	1554VA2GY	1554VA2GYCL	1554VA2GYSL	6	9.40	6.30	3.50	1554VAPL	1554FT	1554VAGASKET	SC583-50
1554VBGY	1554VB2GY	1554VB2GYCL	1554VB2GYSL	6	9.40	6.30	4.70	1554VAPL	1554FT	1554VAGASKET	SC583-50
1554XGY	1554X2GY	1554X2GYCL	1554X2GYSL	6	11.81	7.87	3.54	1554XPL	1554FT-XY	1554XGASKET	SC583-50
1554XAGY	1554XA2GY	1554XA2GYCL	1554XA2GYSL	6	11.81	7.87	4.72	1554XPL	1554FT-XY	1554XGASKET	SC583-50
1554YGY	1554Y2GY	1554Y2GYCL	1554Y2GYSL	6	11.81	9.45	3.74	1554YPL	1554FT-XY	1554YGASKET	SC583-50
1554YAGY	1554YA2GY	1554YA2GYCL	1554YA2GYSL	6	11.81	9.45	4.72	1554YPL	1554FT-XY	1554YGASKET	SC583-50

*Data subject to change without notice*

© 2020, Hammond Manufacturing Ltd. All rights reserved.



*Quality Products. Service Excellence.*

## Diecast Aluminum Enclosures 1590 Series

General Purpose, Wall-Mounting, Water-Tight, Colors



### Features

- Rugged, diecast aluminum alloy (tough - yet easy to machine), electronic instrument enclosure.
- Lap joint construction provides protection against access of dust and splashing water. Also provides for improved EMI/RFI shielding.
- Unpainted version is vibra finished for a smooth surface with no sharp edges.
- Textured black version is coated with tough polyester powder paint for a lasting finish, even after machining. Black screws are included to enhance appearance.
- Includes screws threaded into factory-tapped holes. Screw type and quantity vary. See details below or in drawings.
- Standard versions are designed to meet IP54.
- Water-tight versions are designed to meet IP65 and include a gasket. Gasket is supplied loose inside the enclosure (not pre-installed).
- Low side wall draft angle (2 degrees or less) for easy P.C. board mounting.



### Photo Features



No mounting flanges



Spot-welded bottom flange



Wall-mounting flange integrated into lid.



Lap joint construction where lid and box meet.



Water-tight versions and gasket upgrades available for most sizes.

### Hardware

**NOTE:** 1590 series enclosures feature factory-tapped assembly screw holes that accept machine screws, which are included with the enclosures. Most sizes require four (4) screws. **1590BX**,

**1590BX2, 1590D, 1590DD, 1590DE, 1590E, 1590EE & 1590R1** require six (6). **1590F** requires eight (8). See drawings and/or photos for details.

#### Replacement Hardware



#### Tamper-proof Hardware Upgrade (Torx w/ Pin)



See "Hardware" table below for compatibility.

## Gaskets

**NOTE:** Gaskets are included with watertight 1590 enclosures. They can also be purchased as a kit if you'd like to upgrade an IP54 enclosure to IP65.



- Each kit includes two pre-formed silicone gaskets.
- Gaskets include adhesive backing for easy installation.
- Allows enclosure to be machined and/or painted first and gasketed later.
- Gasket is applied to the lid.
- Gasket as a temperature rating of -40C to +150C
- Designed to meet IP65 with properly installed gasket and lid screws torqued to 25-30 cN.m (36-43 ozf.in).
- Refer to part number table below for correct gasket.

## Notes

- Lid height is 0.16" (4 mm)
- Don't forget to order our watertight screws (stainless steel with o-ring) when converting a standard enclosure to a water-tight box.

#### Other 1590-Series Enclosures

- Nine of our popular "stomp box" sizes are also available in a variety of colors. See the **1590-STOMP** series for details.
- Three of our popular sizes are also available in **diecast zinc (series 1590K4)**. The zinc alloy is heavy weight, high impact, and easy to machine & plate.
- The **1590-RIBBED** series features internal vertical ribs on the side walls.

## Enclosures

No Mounting Flanges		w/ Flanged Lid		w/ Flanged Bottom Plate		Color	Length	Width	Height (Less Lid)	Optional Replacement Gasket Kit
Standard Version	Water-Tight Version	Standard Version	Water-Tight Version	Standard Version	Water-Tight Version					
1590LLB	1590WLLB	1590LLBFL	1590WLLBFL	1590LLBF	1590WLLBF	Natural	1.97	1.97	0.83	1590LBGASKET
1590LLBBK	1590WLLBBK	1590LLBFLBK	1590WLLBFLBK	1590LLBFBK	1590WLLBFBK	Black	1.97	1.97	0.83	1590LBGASKET
1590LB	1590WLB	1590LBFL	1590WLBFL	1590LBF	1590WLBFB	Natural	1.99	1.99	1.06	1590LBGASKET
1590LBBK	1590WLBK	1590LBFLBK	1590WLBFLBK	1590LBFBK	1590WLBFBK	Black	1.99	1.99	1.06	1590LBGASKET
1590H	1590WH			1590HF	1590WHF	Natural	2.07	1.50	1.06	1590HGASKET
1590HBK	1590WHBK			1590HFBK	1590WHFBK	Black	2.07	1.50	1.06	1590HGASKET
1590Y	1590WY	1590YFL	1590WYFL	1590YF	1590WYF	Natural	3.62	3.62	1.50	1590YGASKET
1590YBK	1590WYBK	1590YFLBK	1590WYFLBK	1590YFBK	1590WYFBK	Black	3.62	3.62	1.50	1590YGASKET
1590A	1590WA	1590AFL	1590WAF	1590AF	1590WAF	Natural	3.64	1.52	1.06	1590AGASKET

No Mounting Flanges		w/ Flanged Lid		w/ Flanged Bottom Plate		Color	Length	Width	Height (Less Lid)	Optional Replacement Gasket Kit
Standard Version	Water-Tight Version	Standard Version	Water-Tight Version	Standard Version	Water-Tight Version					
1590ABK	1590WABK	1590AFLBK	1590WAFLBK	1590AFBK	1590WAFBK	Black	3.64	1.52	1.06	1590AGASKET
1590G	1590WG	1590GFL	1590WGFL	1590GF	1590WGF	Natural	3.94	1.97	0.83	1590GGASKET
1590GBK	1590WGBK	1590GFLBK	1590WGFLBK	1590GFBK	1590WGF BK	Black	3.94	1.97	0.83	1590GGASKET
1590G2	1590WG2	1590G2FL	1590WG2FL	1590G2F	1590WG2F	Natural	3.94	1.97	1.06	1590GGASKET
1590G2BK	1590WG2BK	1590G2FLBK	1590WG2FLBK	1590G2FBK	1590WG2FBK	Black	3.94	1.97	1.06	1590GGASKET
1590G2CB						Cobalt Blue	3.94	1.97	1.06	1590GGASKET
1590G2GR						Green	3.94	1.97	1.06	1590GGASKET
1590G2LG						Light Gray	3.94	1.97	1.06	1590GGASKET
1590G2OR						Orange	3.94	1.97	1.06	1590GGASKET
1590G2PR						Purple	3.94	1.97	1.06	1590GGASKET
1590G2RD						Red	3.94	1.97	1.06	1590GGASKET
1590G2YL						Yellow	3.94	1.97	1.06	1590GGASKET
1590S	1590WS	1590SFL	1590WSFL	1590SF	1590WSF	Natural	4.35	3.21	1.57	1590SGASKET
1590SBK	1590WSBK	1590SFLBK	1590WSFLBK	1590SFBK	1590WSFBK	Black	4.35	3.21	1.57	1590SGASKET
1590B	1590WB	1590BFL	1590WBFL	1590BF	1590WBF	Natural	4.40	2.38	1.06	1590BGASKET
1590BBK	1590WBBK	1590BFLBK	1590WBFLBK	1590BFBK	1590WBF BK	Black	4.40	2.38	1.06	1590BGASKET
1590BCB						Cobalt Blue	4.40	2.38	1.06	1590BGASKET
1590BGR						Green	4.40	2.38	1.06	1590BGASKET
1590BLG						Light Gray	4.40	2.38	1.06	1590BGASKET
1590BOR						Orange	4.40	2.38	1.06	1590BGASKET
1590BPR						Purple	4.40	2.38	1.06	1590BGASKET
1590BRD						Red	4.40	2.38	1.06	1590BGASKET
1590BYL						Yellow	4.40	2.38	1.06	1590BGASKET
1590B2	1590WB2	1590B2FL	1590WB2FL	1590B2F	1590WB2F	Natural	4.40	2.38	1.32	1590BGASKET
1590B2BK	1590WB2BK	1590B2FLBK	1590WB2FLBK	1590B2FBK	1590WB2FBK	Black	4.40	2.38	1.32	1590BGASKET
1590B2CB						Cobalt Blue	4.40	2.38	1.32	1590BGASKET
1590B2GR						Green	4.40	2.38	1.32	1590BGASKET
1590B2LG						Light Gray	4.40	2.38	1.32	1590BGASKET
1590B2OR						Orange	4.40	2.38	1.32	1590BGASKET
1590B2PR						Purple	4.40	2.38	1.32	1590BGASKET
1590B2RD						Red	4.40	2.38	1.32	1590BGASKET
1590B2YL						Yellow	4.40	2.38	1.32	1590BGASKET
1590BS	1590WBS	1590BSFL	1590WBSFL	1590BSF	1590WBSF	Natural	4.40	2.38	1.50	1590BGASKET
1590BSBK	1590WBSBK	1590BSFLBK	1590WBSFLBK	1590BSFBK	1590WBSFBK	Black	4.40	2.38	1.50	1590BGASKET
1590BSCB						Cobalt Blue	4.40	2.38	1.50	1590BGASKET
1590BSGR						Green	4.40	2.38	1.50	1590BGASKET
1590BSLG						Light Gray	4.40	2.38	1.50	1590BGASKET
1590BSOR						Orange	4.40	2.38	1.50	1590BGASKET
1590BSPR						Purple	4.40	2.38	1.50	1590BGASKET
1590BSRD						Red	4.40	2.38	1.50	1590BGASKET
1590BSYL						Yellow	4.40	2.38	1.50	1590BGASKET
1590B3	1590WB3	1590B3FL	1590WB3FL	1590B3F	1590WB3F	Natural	4.57	3.03	1.32	1590B3GASKET
1590B3BK	1590WB3BK	1590B3FLBK	1590WB3FLBK	1590B3FBK	1590WB3FBK	Black	4.57	3.03	1.32	1590B3GASKET
1590B3CB						Cobalt Blue	4.57	3.03	1.32	1590B3GASKET
1590B3GR						Green	4.57	3.03	1.32	1590B3GASKET
1590B3LG						Light Gray	4.57	3.03	1.32	1590B3GASKET
1590B3OR						Orange	4.57	3.03	1.32	1590B3GASKET
1590B3PR						Purple	4.57	3.03	1.32	1590B3GASKET
1590B3RD						Red	4.57	3.03	1.32	1590B3GASKET
1590B3YL						Yellow	4.57	3.03	1.32	1590B3GASKET
1590BB	1590WBB	1590BBFL	1590WBBFL	1590BBF	1590WBBF	Natural	4.67	3.68	1.18	1590BBGASKET
1590BBBK	1590WBBBK	1590BBFLBK	1590WBBFLBK	1590BBFBK	1590WBBFBK	Black	4.67	3.68	1.18	1590BBGASKET
1590BBCB						Cobalt Blue	4.67	3.68	1.18	1590BBGASKET
1590BBGR						Green	4.67	3.68	1.18	1590BBGASKET

No Mounting Flanges		w/ Flanged Lid		w/ Flanged Bottom Plate		Color	Length	Width	Height (Less Lid)	Optional Replacement Gasket Kit
Standard Version	Water-Tight Version	Standard Version	Water-Tight Version	Standard Version	Water-Tight Version					
1590BBLG						Light Gray	4.67	3.68	1.18	1590BBGASKET
1590BBOR						Orange	4.67	3.68	1.18	1590BBGASKET
1590BBPR						Purple	4.67	3.68	1.18	1590BBGASKET
1590BBRD						Red	4.67	3.68	1.18	1590BBGASKET
1590BBYL						Yellow	4.67	3.68	1.18	1590BBGASKET
1590BB2	1590WBB2	1590BB2FL	1590WBB2FL	1590BB2F	1590WBB2F	Natural	4.70	3.70	1.33	1590BBGASKET
1590BB2BK	1590WBB2BK	1590BB2FLBK	1590WBB2FLBK	1590BB2FBK	1590WBB2FBK	Black	4.70	3.70	1.33	1590BBGASKET
1590BB2CB						Cobalt Blue	4.70	3.70	1.33	1590BBGASKET
1590BB2GR						Green	4.70	3.70	1.33	1590BBGASKET
1590BB2LG						Light Gray	4.70	3.70	1.33	1590BBGASKET
1590BB2OR						Orange	4.70	3.70	1.33	1590BBGASKET
1590BB2PR						Purple	4.70	3.70	1.33	1590BBGASKET
1590BB2RD						Red	4.70	3.70	1.33	1590BBGASKET
1590BB2YL						Yellow	4.70	3.70	1.33	1590BBGASKET
1590BBS	1590WBBS	1590BBSFL	1590WBBSFL	1590BBSF	1590WBBSF	Natural	4.70	3.70	1.50	1590BBGASKET
1590BBSBK	1590WBBSBK	1590BBSFLBK	1590WBBSFLBK	1590BBSFBK	1590WBBSFBK	Black	4.70	3.70	1.50	1590BBGASKET
1590BBSCB						Cobalt Blue	4.70	3.70	1.50	1590BBGASKET
1590BBSGR						Green	4.70	3.70	1.50	1590BBGASKET
1590BBSLG						Light Gray	4.70	3.70	1.50	1590BBGASKET
1590BBSOR						Orange	4.70	3.70	1.50	1590BBGASKET
1590BBSPR						Purple	4.70	3.70	1.50	1590BBGASKET
1590BBSRD						Red	4.70	3.70	1.50	1590BBGASKET
1590BBSYL						Yellow	4.70	3.70	1.50	1590BBGASKET
1590Q	1590WQ	1590QFL	1590WQFL	1590QF	1590WQF	Natural	4.70	4.70	1.10	1590QGASKET
1590QBK	1590WQBK	1590QFLBK	1590WQFLBK	1590QFBK	1590WQFBK	Black	4.70	4.70	1.10	1590QGASKET
1590U	1590WU	1590UFL	1590WUFL	1590UF	1590WUF	Natural	4.70	4.70	2.17	1590QGASKET
1590UBK	1590WUBK	1590UFLBK	1590WUFLBK	1590UFBK	1590WUFBK	Black	4.70	4.70	2.17	1590QGASKET
1590V	1590WV	1590VFL	1590WVFL	1590VF	1590WVF	Natural	4.70	4.70	3.54	1590QGASKET
1590VBK	1590WVBK	1590VFLBK	1590WVFLBK	1590VFBK	1590WVFBK	Black	4.70	4.70	3.54	1590QGASKET
1590C	1590WC	1590CFL	1590WCFL	1590CF	1590WCF	Natural	4.72	3.70	2.10	1590BBGASKET
1590CBK	1590WCBK	1590CFLBK	1590WCFLBK	1590CFBK	1590WCFBK	Black	4.72	3.70	2.10	1590BBGASKET
1590T	1590WT	1590TFL	1590WTFL	1590TF	1590WTF	Natural	4.74	3.13	2.17	1590TGASKET
1590TBK	1590WTBK	1590TFLBK	1590WTFLBK	1590TFBK	1590WTFBK	Black	4.74	3.13	2.17	1590TGASKET
1590CE	1590WCE					Natural	4.74	3.95	2.37	1590CEGASKET
1590CEBK	1590WCEBK					Black	4.74	3.95	2.37	1590CEGASKET
1590N1	1590WN1	1590N1FL	1590WN1FL	1590N1F	1590WN1F	Natural	4.77	2.60	1.39	1590NGASKET
1590N1BK	1590WN1BK	1590N1FLBK	1590WN1FLBK	1590N1FBK	1590WN1FBK	Black	4.77	2.60	1.39	1590NGASKET
1590KK	1590WKK	1590KKFL	1590WKKFL	1590KKF	1590WKKF	Natural	4.92	4.92	2.10	1590KGASKET
1590KKBK	1590WKKBK	1590KKFLBK	1590WKKFLBK	1590KKFBK	1590WKKFBK	Black	4.92	4.92	2.10	1590KGASKET
1590K	1590WK			1590KF	1590WKF	Natural	4.92	4.92	2.95	1590KGASKET
1590KBK	1590WKBK			1590KFBK	1590WKFBK	Black	4.92	4.92	2.95	1590KGASKET
1590J	1590WJ			1590JF	1590WJF	Natural	5.71	3.74	1.77	1590JGASKET
1590JBK	1590WJBK			1590JFBK	1590WJFBK	Black	5.71	3.74	1.77	1590JGASKET
1590XX	1590WXX	1590XXFL	1590WXXFL			Natural	5.72	4.77	1.39	1590XGASKET
1590XXBK	1590WXXBK	1590XXFLBK	1590WXXFLBK			Black	5.72	4.77	1.39	1590XGASKET
1590XXCB						Cobalt Blue	5.72	4.77	1.39	1590XGASKET
1590XXGR						Green	5.72	4.77	1.39	1590XGASKET
1590XXLG						Light Gray	5.72	4.77	1.39	1590XGASKET
1590XXOR						Orange	5.72	4.77	1.39	1590XGASKET
1590XXPR						Purple	5.72	4.77	1.39	1590XGASKET
1590XXRD						Red	5.72	4.77	1.39	1590XGASKET
1590XXYL						Yellow	5.72	4.77	1.39	1590XGASKET
1590X	1590WX	1590XFL	1590WXFL			Natural	5.72	4.77	2.06	1590XGASKET

No Mounting Flanges		w/ Flanged Lid		w/ Flanged Bottom Plate		Color	Length	Width	Height (Less Lid)	Optional Replacement Gasket Kit
Standard Version	Water-Tight Version	Standard Version	Water-Tight Version	Standard Version	Water-Tight Version					
1590XBK	1590WXBK	1590XFLBK	1590WXFLBK			Black	5.72	4.77	2.06	1590XGASKET
1590P1	1590WP1	1590P1FL	1590WP1FL	1590P1F	1590WP1F	Natural	6.01	3.24	1.81	1590PGASKET
1590P1BK	1590WP1BK	1590P1FLBK	1590WP1FLBK	1590P1FBK	1590WP1FBK	Black	6.01	3.24	1.81	1590PGASKET
1590DD	1590WDD	1590DDFL	1590WDDFL	1590DDF	1590WDDF	Natural	7.38	4.70	1.30	1590EGASKET
1590ddbK	1590WddbK	1590DDFLBK	1590WDDFLBK	1590DDFBK	1590WDDFBK	Black	7.38	4.70	1.30	1590EGASKET
1590D	1590WD	1590DFL	1590WDFL	1590DF	1590WDF	Natural	7.38	4.70	2.05	1590EGASKET
1590dbK	1590WdbK	1590DFLBK	1590WDFLBK	1590DFBK	1590WDFBK	Black	7.38	4.70	2.05	1590EGASKET
1590E	1590WE	1590EFL	1590WEFL	1590EF	1590WEF	Natural	7.38	4.70	3.07	1590EGASKET
1590EbK	1590WEbK	1590EFLBK	1590WEFLBK	1590EFBK	1590WEFBK	Black	7.38	4.70	3.07	1590EGASKET
1590F	1590WF	1590FFL	1590WFFL	1590FF	1590WFF	Natural	7.38	7.38	2.48	1590FGASKET
1590fBK	1590WfBK	1590FFLBK	1590WFFLBK	1590FFBK	1590WFFBK	Black	7.38	7.38	2.48	1590FGASKET
1590R1	1590WR1	1590R1FL	1590WR1FL	1590R1F	1590WR1F	Natural	7.55	4.38	2.24	1590RGASKET
1590R1BK	1590WR1BK	1590R1FLBK	1590WR1FLBK	1590R1FBK	1590WR1FBK	Black	7.55	4.38	2.24	1590RGASKET
1590DE	1590WDE					Natural	7.88	4.73	2.37	1590DEGASKET
1590DEBK	1590WDEBK					Black	7.88	4.73	2.37	1590DEGASKET
1590EE	1590WEE					Natural	7.88	4.73	3.17	1590DEGASKET
1590EEBK	1590WEEBK					Black	7.88	4.73	3.17	1590DEGASKET
1590BX2	1590WBX2	1590BX2FL	1590WBX2FL	1590BX2F	1590WBX2F	Natural	10.00	2.80	1.40	1590BXGASKET
1590BX2BK	1590WBX2BK	1590BX2FLBK	1590WBX2FLBK	1590BX2FBK	1590WBX2FBK	Black	10.00	2.80	1.40	1590BXGASKET
1590BX	1590WBX	1590BXFL	1590WBXFL	1590BXF	1590WBXF	Natural	10.00	2.80	2.00	1590BXGASKET
1590BXBK	1590WBXBK	1590BXFLBK	1590WBXFLBK	1590BXFBK	1590WBXFBK	Black	10.00	2.80	2.00	1590BXGASKET

NOTE: Lid height is 0.16" (4 mm)

### Replacement or Upgrade Hardware Packs

Size	Philips Head Machine Screws (100 or 50-packs)				Torx with Pin Tamper-Resistant Screws (50-packs)				
	Natural	Black	Water Tight	Water-Tight Black	Natural	Black	Water Tight	Water-Tight Black	Screwdriver Bit
1590LLB	1590MS100	1590MS50BK	1590WMS100	1590WMS100BK	1590MS50T	1590MS50TBK	1590WMS50T	1590WMS50TBK	SCDRIVET10-2
1590LB	1590MS100	1590MS50BK	1590WMS100	1590WMS100BK	1590MS50T	1590MS50TBK	1590WMS50T	1590WMS50TBK	SCDRIVET10-2
1590H	1590MS100	1590MS50BK	1590WMS100	1590WMS100BK	1590MS50T	1590MS50TBK	1590WMS50T	1590WMS50TBK	SCDRIVET10-2
1590Y	1590MS100	1590MS50BK	1590WMS100	1590WMS100BK	1590MS50T	1590MS50TBK	1590WMS50T	1590WMS50TBK	SCDRIVET10-2
1590A	1590MS100	1590MS50BK	1590WMS100	1590WMS100BK	1590MS50T	1590MS50TBK	1590WMS50T	1590WMS50TBK	SCDRIVET10-2
1590G	1590MS100	1590MS50BK	1590WMS100	1590WMS100BK	1590MS50T	1590MS50TBK	1590WMS50T	1590WMS50TBK	SCDRIVET10-2
1590G2	1590MS100	1590MS50BK	1590WMS100	1590WMS100BK	1590MS50T	1590MS50TBK	1590WMS50T	1590WMS50TBK	SCDRIVET10-2
1590S	1590MS100	1590MS50BK	1590WMS100	1590WMS100BK	1590MS50T	1590MS50TBK	1590WMS50T	1590WMS50TBK	SCDRIVET10-2
1590B	1590MS100	1590MS50BK	1590WMS100	1590WMS100BK	1590MS50T	1590MS50TBK	1590WMS50T	1590WMS50TBK	SCDRIVET10-2
1590B2	1590MS100	1590MS50BK	1590WMS100	1590WMS100BK	1590MS50T	1590MS50TBK	1590WMS50T	1590WMS50TBK	SCDRIVET10-2
1590BS	1590MS100	1590MS50BK	1590WMS100	1590WMS100BK	1590MS50T	1590MS50TBK	1590WMS50T	1590WMS50TBK	SCDRIVET10-2
1590B3	1590MS100	1590MS50BK	1590WMS100	1590WMS100BK	1590MS50T	1590MS50TBK	1590WMS50T	1590WMS50TBK	SCDRIVET10-2
1590BB	1590MS100	1590MS50BK	1590WMS100	1590WMS100BK	1590MS50T	1590MS50TBK	1590WMS50T	1590WMS50TBK	SCDRIVET10-2
1590BB2	1590MS100	1590MS50BK	1590WMS100	1590WMS100BK	1590MS50T	1590MS50TBK	1590WMS50T	1590WMS50TBK	SCDRIVET10-2
1590BBS	1590MS100	1590MS50BK	1590WMS100	1590WMS100BK	1590MS50T	1590MS50TBK	1590WMS50T	1590WMS50TBK	SCDRIVET10-2
1590Q	1590MS100	1590MS50BK	1590WMS100	1590WMS100BK	1590MS50T	1590MS50TBK	1590WMS50T	1590WMS50TBK	SCDRIVET10-2
1590U	1590MS100	1590MS50BK	1590WMS100	1590WMS100BK	1590MS50T	1590MS50TBK	1590WMS50T	1590WMS50TBK	SCDRIVET10-2
1590V	1590MS100	1590MS50BK	1590WMS100	1590WMS100BK	1590MS50T	1590MS50TBK	1590WMS50T	1590WMS50TBK	SCDRIVET10-2
1590C	1590MS100	1590MS50BK	1590WMS100	1590WMS100BK	1590MS50T	1590MS50TBK	1590WMS50T	1590WMS50TBK	SCDRIVET10-2
1590T	1590MS100	1590MS50BK	1590WMS100	1590WMS100BK	1590MS50T	1590MS50TBK	1590WMS50T	1590WMS50TBK	SCDRIVET10-2
1590CE	1550MS100	1550MS100BK	1550WMS100	1550WMS100BK	1550MS50T	1550MS50TBK	1550WMS50T	1550WMS50TBK	SCDRIVET15-2
1590N1	1590MS100	1590MS50BK	1590WMS100	1590WMS100BK	1590MS50T	1590MS50TBK	1590WMS50T	1590WMS50TBK	SCDRIVET10-2
1590KK	1590MS100	1590MS50BK	1590WMS100	1590WMS100BK	1590MS50T	1590MS50TBK	1590WMS50T	1590WMS50TBK	SCDRIVET10-2
1590K	1590MS100	1590MS50BK	1590WMS100	1590WMS100BK	1590MS50T	1590MS50TBK	1590WMS50T	1590WMS50TBK	SCDRIVET10-2
1590J	1590MS100	1590MS50BK	1590WMS100	1590WMS100BK	1590MS50T	1590MS50TBK	1590WMS50T	1590WMS50TBK	SCDRIVET10-2



Size	Philips Head Machine Screws (100 or 50-packs)				Torx with Pin Tamper-Resistant Screws (50-packs)				
	Natural	Black	Water Tight	Water-Tight Black	Natural	Black	Water Tight	Water-Tight Black	Screwdriver Bit
1590XX	1590MS100	1590MS50BK	1590WMS100	1590WMS100BK	1590MS50T	1590MS50TBK	1590WMS50T	1590WMS50TBK	SCDRIVET10-2
1590X	1590MS100	1590MS50BK	1590WMS100	1590WMS100BK	1590MS50T	1590MS50TBK	1590WMS50T	1590WMS50TBK	SCDRIVET10-2
1590P1	1590MS100	1590MS50BK	1590WMS100	1590WMS100BK	1590MS50T	1590MS50TBK	1590WMS50T	1590WMS50TBK	SCDRIVET10-2
1590DD	1590MS100	1590MS50BK	1590WMS100	1590WMS100BK	1590MS50T	1590MS50TBK	1590WMS50T	1590WMS50TBK	SCDRIVET10-2
1590D	1590MS100	1590MS50BK	1590WMS100	1590WMS100BK	1590MS50T	1590MS50TBK	1590WMS50T	1590WMS50TBK	SCDRIVET10-2
1590E	1590MS100	1590MS50BK	1590WMS100	1590WMS100BK	1590MS50T	1590MS50TBK	1590WMS50T	1590WMS50TBK	SCDRIVET10-2
1590F	1590MS100	1590MS50BK	1590WMS100	1590WMS100BK	1590MS50T	1590MS50TBK	1590WMS50T	1590WMS50TBK	SCDRIVET10-2
1590R1	1590MS100	1590MS50BK	1590WMS100	1590WMS100BK	1590MS50T	1590MS50TBK	1590WMS50T	1590WMS50TBK	SCDRIVET10-2
1590DE	1550MS100	1550MS100BK	1550WMS100	1550WMS100BK	1550MS50T	1550MS50TBK	1550WMS50T	1550WMS50TBK	SCDRIVET15-2
1590EE	1550MS100	1550MS100BK	1550WMS100	1550WMS100BK	1550MS50T	1550MS50TBK	1550WMS50T	1550WMS50TBK	SCDRIVET15-2
1590BX2	1590MS100	1590MS50BK	1590WMS100	1590WMS100BK	1590MS50T	1590MS50TBK	1590WMS50T	1590WMS50TBK	SCDRIVET10-2
1590BX	1590MS100	1590MS50BK	1590WMS100	1590WMS100BK	1590MS50T	1590MS50TBK	1590WMS50T	1590WMS50TBK	SCDRIVET10-2

*Data subject to change without notice*

© 2020. Hammond Manufacturing Ltd. All rights reserved.

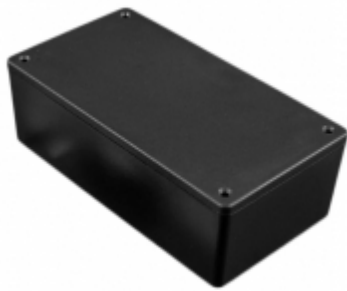


*Quality Products. Service Excellence.*

## ABS Plastic Multi-Purpose Enclosures w/ PC Board Standoffs 1591XX

### Series

Flame Retardant, General Purpose, Flanged Lid Options

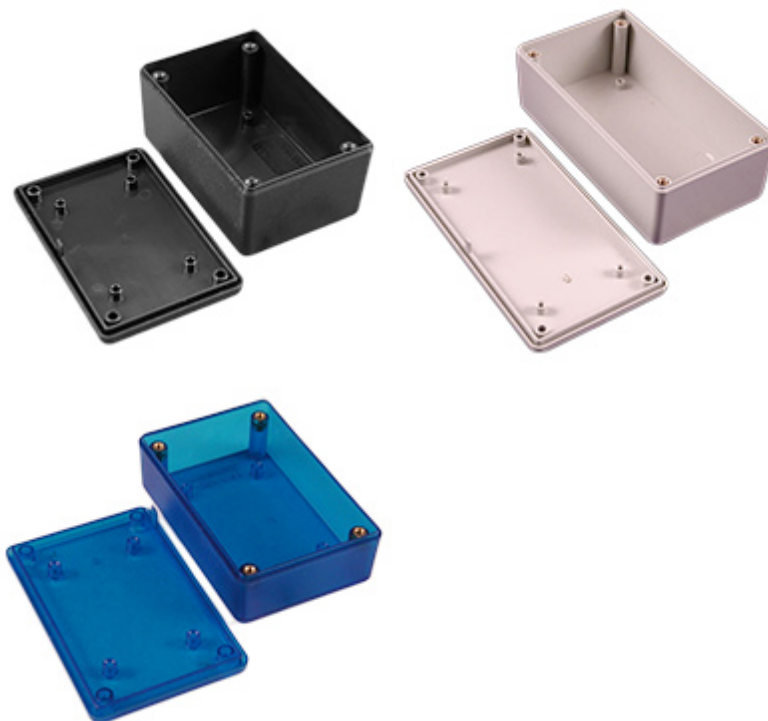


### Key Features:

- Ideally suited for mounting printed circuit boards horizontally.
- Internal sides of enclosure are smooth for easy connector installation except for the largest enclosure. 1591XXF. 1591XXF size is a universal type which includes P.C.board standoffs in the lid and enclosure PLUS includes card guides.
- Strong tongue and groove lid to box construction provides protection against access of dust and splashing water.
- Designed to meet IP54.
- Lid and box both contain - molded in PC board standoffs.
- Standard black and gray versions molded from easy to machine, flame retardant ABS plastic (material carries a UL flammability rating of 94V-0).
- Transparent blue and all economy versions are molded from general purpose (not flame-retardant) plastic.
- Stocked in satin texture black and grey.
- On standard versions, the lid is secured with M3 x 10 mm Phillips machine screws threaded into integral brass bushings. Perfect for applications with repetitive assembly and disassembly are required.
- Economy versions are assembled with self tapping screws into fully plastic posts.
- Black and transparent blue enclosures include black screws, gray enclosures include nickel plated screws.

### Photo Features:

Available in black, gray, or transparent blue. PC board mounting bosses located inside the box and lid.



Also available with mounting flanges integrated into the lid (black and gray only)

Accessory flanges are also available (sold separately from enclosures).



### Accessories

- Plastic Flanges

### Enclosures Without Mounting Flanges

Flame Retardant Plastic w/ Brass Screw Inserts		General Purpose ABS w/ Brass Screw Inserts	General Purpose ABS w/ Self Tapping Screws	Length	Width	Enclosure Depth (Less Lid)
Black	Gray	Transparent Blue	Black			
1591XXMBK	1591XXMGY	1591XXMTBU	1591XXMSBK	3.30	2.20	0.90
1591XXLBK	1591XXLGY	1591XXLTBU	1591XXLSBK	3.40	2.20	1.40
1591XXABK	1591XXAGY	1591XXATBU	1591XXASBK	3.90	2.00	0.80
1591XXSBK	1591XXSGY	1591XXSTBU	1591XXSSBK	4.30	3.20	1.60
1591XXBBK	1591XXBGY	1591XXBTBU	1591XXBSBK	4.40	2.50	1.10
1591XXCBK	1591XXCGY	1591XXCTBU	1591XXCSBK	4.70	2.60	1.40
1591XXTBK	1591XXTGY	1591XXTTBU	1591XXTSBK	4.80	3.20	2.20
1591XXGBK	1591XXGGY	1591XXGTBU	1591XXGSBK	4.80	3.70	1.40
1591XXUBK	1591XXUGY		1591XXUSBK	4.86	4.86	2.25
1591XXDBK	1591XXDGY	1591XXDTBU	1591XXDSBK	6.00	3.20	1.80

Flame Retardant Plastic w/ Brass Screw Inserts		General Purpose ABS w/ Brass Screw Inserts		General Purpose ABS w/ Self Tapping Screws		Enclosure Depth (Less Lid)	
Black	Gray	Transparent Blue		Black	Length	Width	
1591XXEBK	1591XXEGY	1591XXETBU		1591XXESBK	7.60	4.40	2.20
1591XXFBK	1591XXFGY			1591XXFSBK	8.70	5.90	2.30

### Enclosures With Mounting Flanges

Flame Retardant Plastic w/ Brass Screw Inserts		General Purpose ABS w/ Self Tapping Screws		Length	Width	Enclosure Depth (Less Lid)
Black	Gray	Black				
1591XXMFLBK	1591XXMFLGY	1591XXMSFLBK		3.30	2.20	0.90
1591XXLFLBK	1591XXLFLGY	1591XXLSFLBK		3.40	2.20	1.40
1591XXAFLBK	1591XXAFLGY	1591XXASFLBK		3.90	2.00	0.80
1591XXSFLBK	1591XXSFLGY	1591XXSSFLBK		4.30	3.20	1.60
1591XXBFLBK	1591XXBFLGY	1591XXBSFLBK		4.40	2.50	1.10
1591XXCFLBK	1591XXCFLGY	1591XXCSFLBK		4.70	2.60	1.40
1591XXTFLBK	1591XXTFLGY	1591XXTSFLBK		4.80	3.20	2.20
1591XXGFLBK	1591XXGFLGY	1591XXGSFLBK		4.80	3.70	1.40
1591XXUFLBK	1591XXUFLGY	1591XXUSFLBK		4.86	4.86	2.25
1591XXDFLBK	1591XXDFLGY	1591XXDSFLBK		6.00	3.20	1.80
1591XXEFLBK	1591XXEFLGY	1591XXESFLBK		7.60	4.40	2.20
1591XXFFLBK	1591XXFFLGY	1591XXFSFLBK		8.70	5.90	2.30

Tags: **project box**

*Data subject to change without notice*

© 2020. Hammond Manufacturing Ltd. All rights reserved.