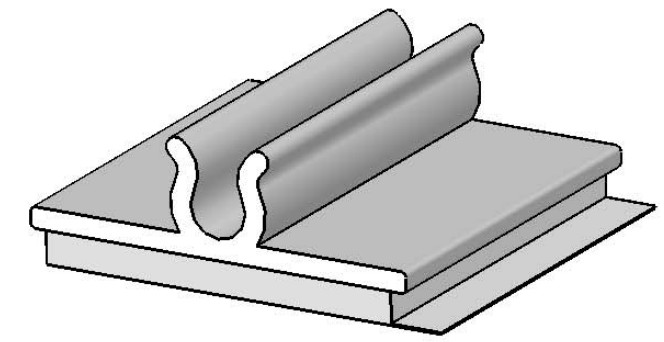
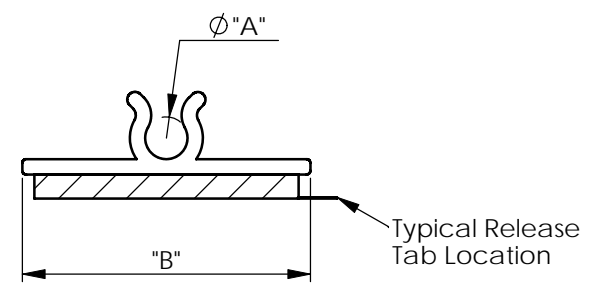
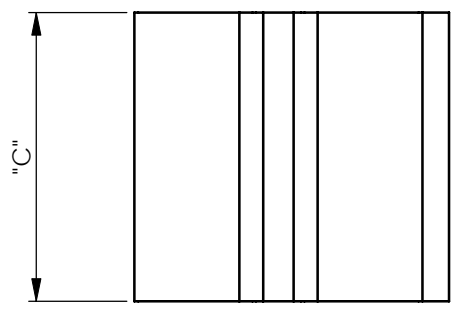


| REV. | MODIFICATION. | DATE | DRN |
|------|---------------|----------|-----|
| 01 | ECN2008-002 | 03/01/08 | SF |
| 02 | CO 2010792 | 27/08/09 | PH |



- NOTES:
1. ALSO AVAILABLE IN CLEAR RIGID PVC (RMS-32) BY SPECIAL ORDER.
 2. CUSTOM LENGTHS AVAILABLE BY SPECIAL ORDER.
 3. * AVAILABLE BY SPECIAL ORDER ONLY.

| Part No | "A" Holding Capacity | "B" ±0.5 (0.02) | "C" ±0.5 (0.02) | "D" At Max Capacity Ref. | Adhesive Reference. |
|-------------|----------------------|-----------------|-----------------|--------------------------|---|
| KKU-2A4-RT | 3.2 [0.13] | 19.1 [0.75] | 19.1 [0.75] | 7.1 [0.28] | 1.0(0.04)Thick, Double Sided Acrylic Adhesive RMS-324 |
| KKU-4A4-RT | 6.4 [0.25] | | | 11.9 [0.47] | |
| KKU-6A4-RT | 9.5 [0.37] | | | 15.1 [0.59] | |
| KKU-8A4-RT | 12.7 [0.50] | 25.4 [1.00] | 25.4 [1.00] | 17.5[0.69] | 1.6(0.06)Thick, Double Sided Acrylic Adhesive RMS-359 |
| KKU-9A5-RT | 14.3 [0.56] | | | 19.1 [0.75] | 1.0(0.04)Thick, Double Sided Acrylic Adhesive RMS-324 |
| KKU-12A4-RT | 19.1[0.75] | | | 23.0[0.90] | 1.6(0.06)Thick, Double Sided Acrylic Adhesive RMS-15 |
| KKU-14-RT* | 22.2 [0.87] | | | 22.2 [0.86] | |

ALTERNATE UNITS FOR REFERENCE ONLY

INFORMATION CONTAINED IN THIS DOCUMENT IS CONFIDENTIAL TO RICHCO INTERNATIONAL Co. Ltd. AND MAY NOT BE DISCLOSED OR REPRODUCED IN WHOLE OR PART WITHOUT THEIR WRITTEN CONSENT.

| | | |
|---|---|--------------------|
| RICHCO, INC. WWW.RICHCO-INC.COM | ALL DIMENSIONS IN mm GENERAL TOLERANCES ±0.25 UNLESS OTHERWISE STATED 1 DECIMAL PLACE ± 2 DECIMAL PLACES ± ANGULAR ±1° | THIRD ANGLE |
| | MATERIAL: Rigid PVC UL94 V-0 (RMS-04) COLOUR: Grey | |
| DESCRIPTION: U Style Clamp On Adhesive Base | | PART No: See Table |
| DRG No: 2008-002 | NPR No: XXXX-XXX | SHEET SIZE A4 |
| DRN SF | DATE 03/01/08 | CHKD NB |
| | DATE 04/01/08 | SCALE NTS |
| | | SHEET No. 1 OF 1 |